



# HIGHLY VISIBLE OFFICE SPACE IN US BANK BRANCH

10100 W. 119th Street, Overland Park, Kansas



## LEASE RATE: \$19/SF FULL SERVICE

### DEMOGRAPHICS

	1 mile	3 miles	5 miles
Estimated Population	13,937	96,625	246,883
Avg. Household Income	\$107,252	\$108,628	\$119,324

- 1,652 & 2,381 SF spaces available
- Immediate access to 69 Highway and 119th Street
- Well maintained US Bank building
- 246,883 population and \$119,324 average household income within five miles
- Highly visible location on the corner of 119th Street and 69 Highway in the Highland Plaza Shopping Center



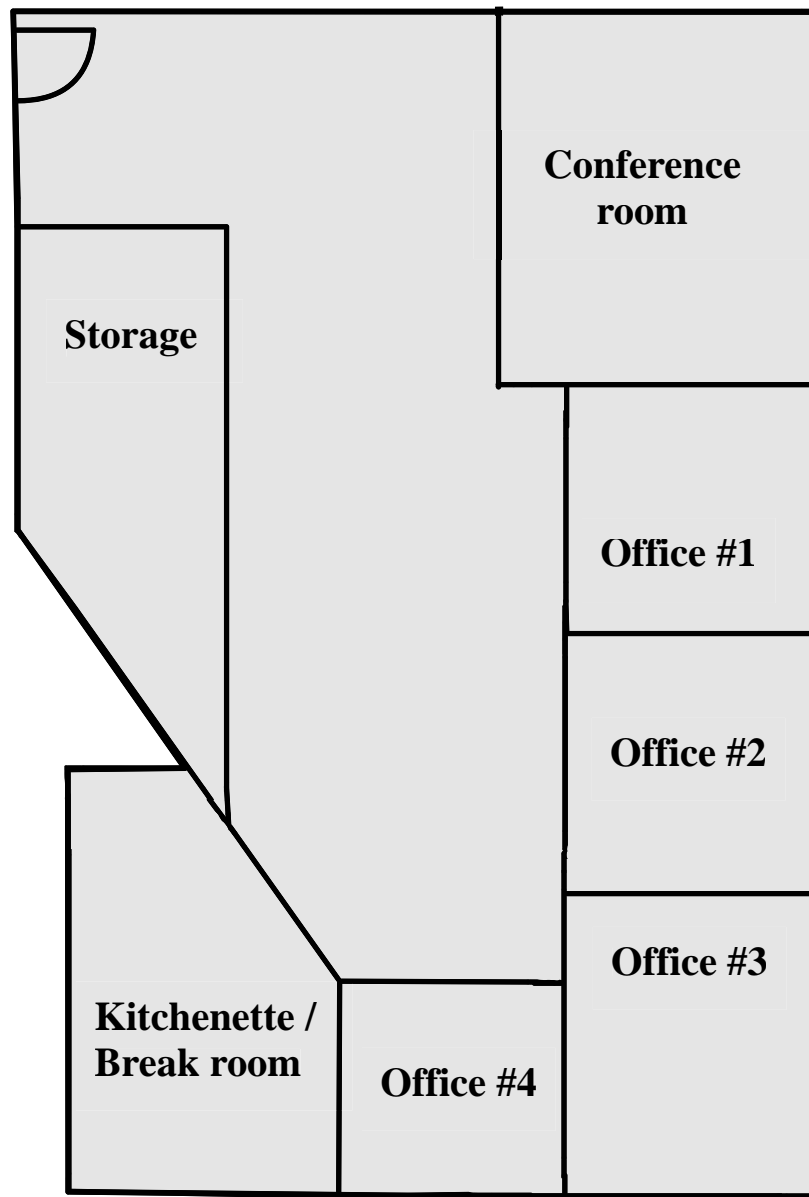
CLICK HERE TO VIEW MORE  
LISTING INFORMATION

### For More Information Contact:

DANIEL BROCATO | 816.412.7303 | [dbrocato@blockandco.com](mailto:dbrocato@blockandco.com)  
KARSYN SMITH | 816.412.7372 | [karsynsmith@blockandco.com](mailto:karsynsmith@blockandco.com)

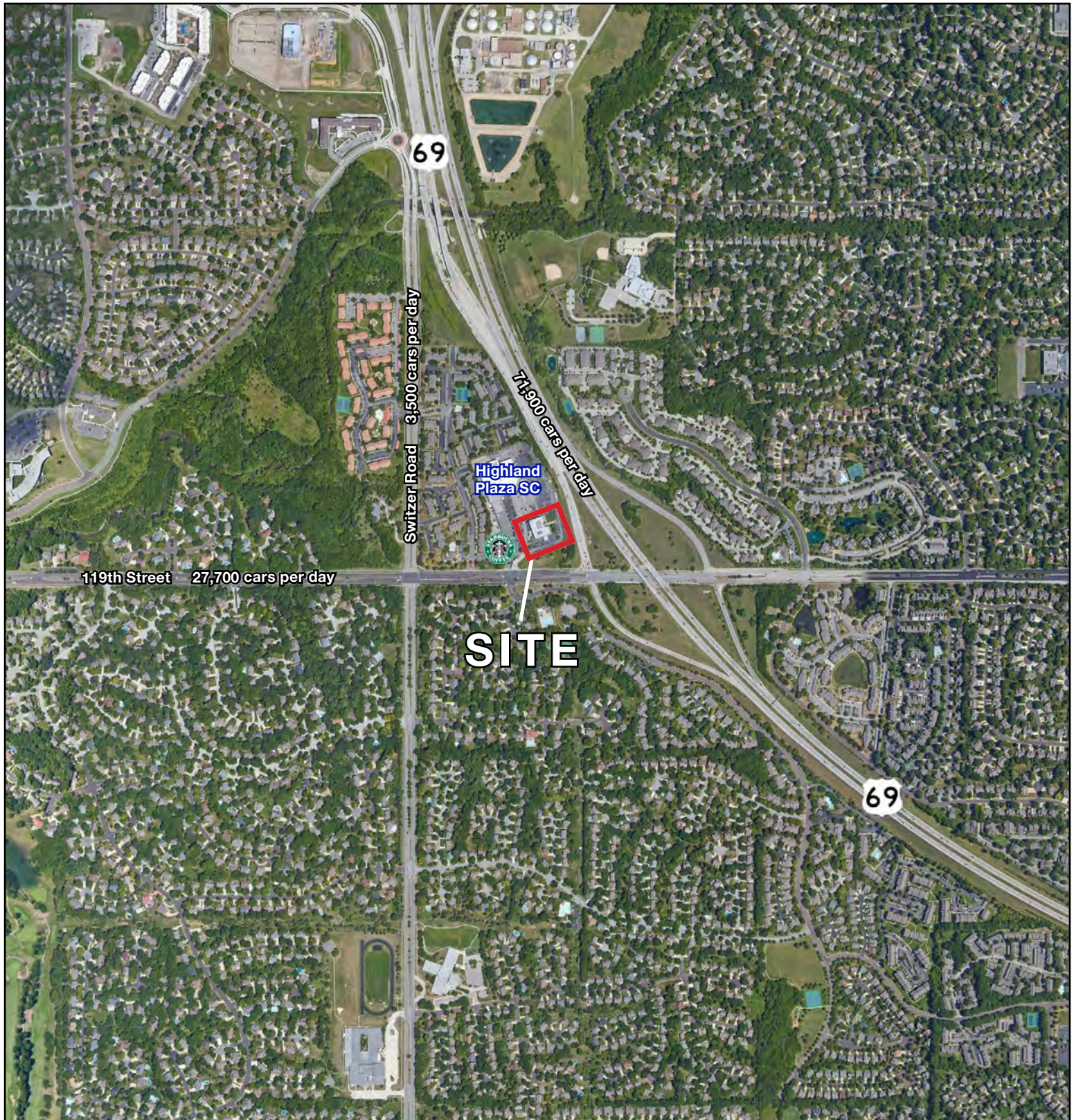
**FLOOR PLAN**

**First floor suite (2,381 Sq Ft)**





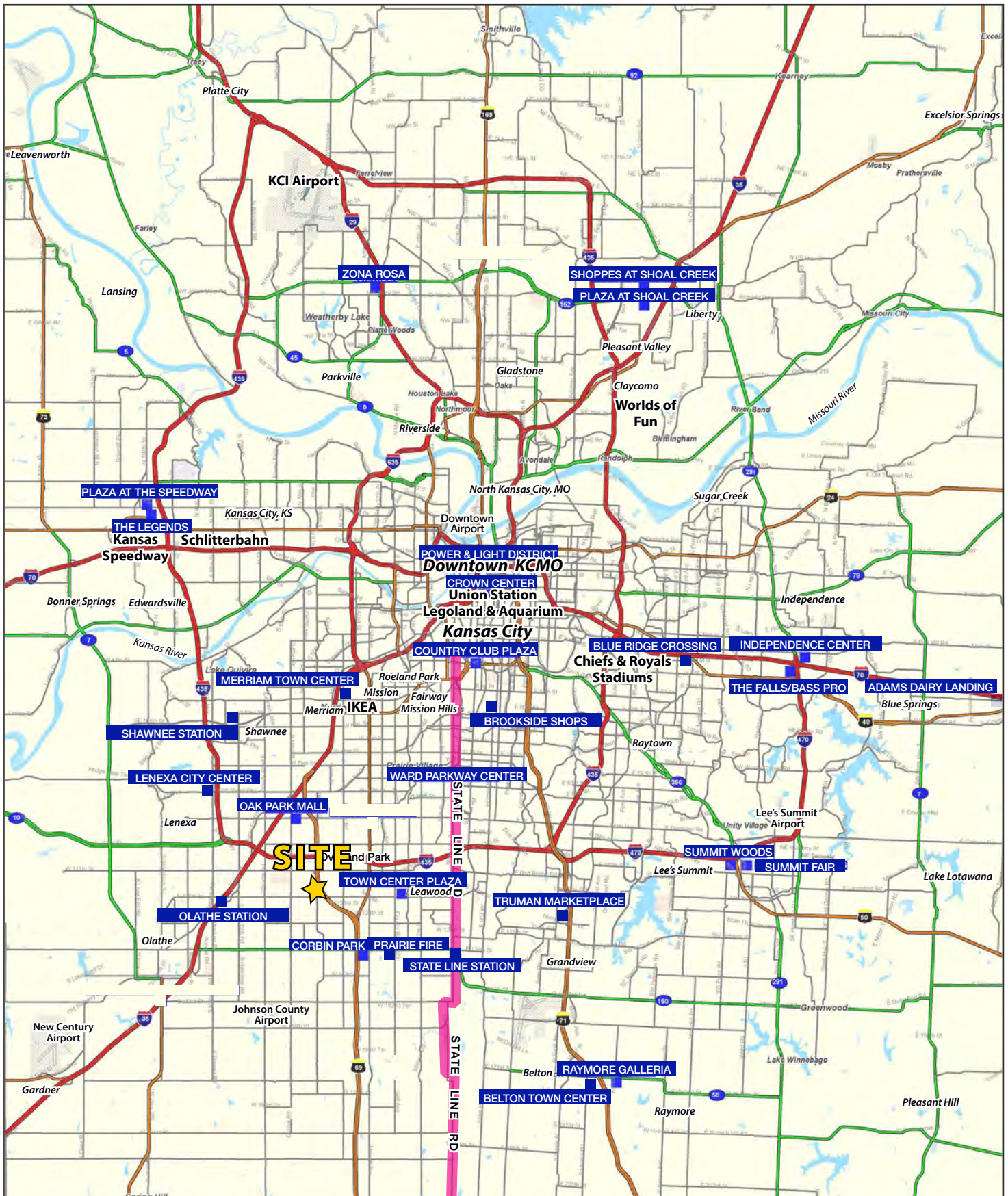
AERIAL





# HIGHLY VISIBLE OFFICE SPACE IN US BANK BRANCH

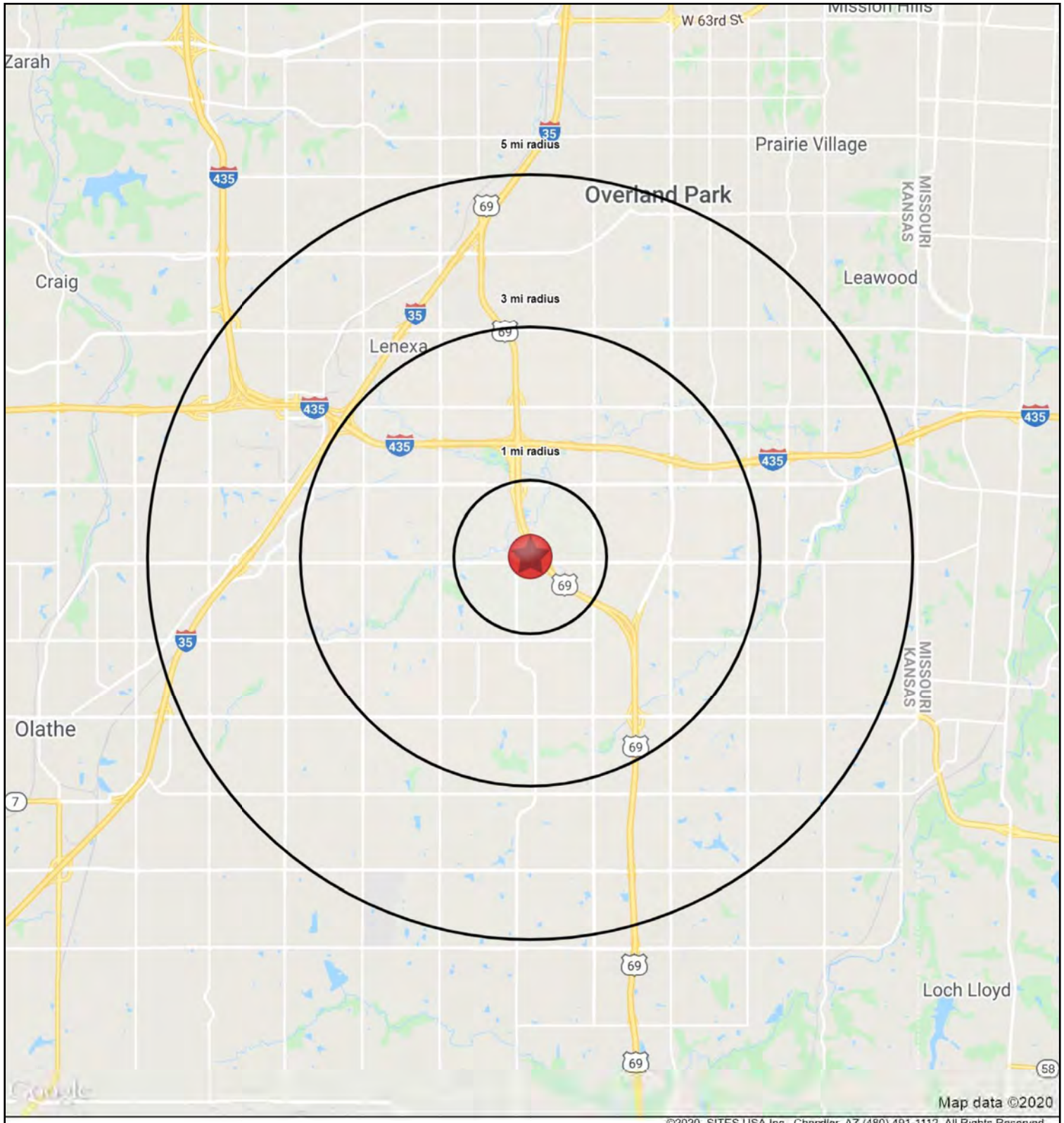
10100 W. 119th Street, Overland Park, Kansas





# HIGHLY VISIBLE OFFICE SPACE IN US BANK BRANCH

10100 W. 119th Street, Overland Park, Kansas





# HIGHLY VISIBLE OFFICE SPACE IN US BANK BRANCH

## 10100 W. 119th Street, Overland Park, Kansas

HS1

10100 W. 119th Street		1 mi radius	3 mi radius	5 mi radius
Overland Park, KS 66213				
POPULATION	2019 Estimated Population	13,937	96,625	246,883
	2024 Projected Population	14,725	101,930	260,178
	2010 Census Population	13,537	88,188	227,068
	2000 Census Population	13,474	83,251	199,958
	Projected Annual Growth 2019 to 2024	1.1%	1.1%	1.1%
	Historical Annual Growth 2000 to 2019	0.2%	0.8%	1.2%
	2019 Median Age	38.7	40.4	39.5
HOUSEHOLDS	2019 Estimated Households	6,669	42,511	104,153
	2024 Projected Households	7,038	44,875	109,955
	2010 Census Households	6,234	37,269	92,229
	2000 Census Households	5,597	32,529	77,299
	Projected Annual Growth 2019 to 2024	1.1%	1.1%	1.1%
	Historical Annual Growth 2000 to 2019	1.0%	1.6%	1.8%
RACE AND ETHNICITY	2019 Estimated White	81.0%	81.8%	81.4%
	2019 Estimated Black or African American	4.7%	5.4%	5.7%
	2019 Estimated Asian or Pacific Islander	10.0%	8.0%	7.2%
	2019 Estimated American Indian or Native Alaskan	0.1%	0.3%	0.3%
	2019 Estimated Other Races	4.2%	4.5%	5.3%
	2019 Estimated Hispanic	4.8%	6.5%	7.7%
INCOME	2019 Estimated Average Household Income	\$107,252	\$108,628	\$119,324
	2019 Estimated Median Household Income	\$85,465	\$91,422	\$94,380
	2019 Estimated Per Capita Income	\$51,323	\$47,858	\$50,396
EDUCATION (AGE 25+)	2019 Estimated Elementary (Grade Level 0 to 8)	1.3%	1.6%	1.8%
	2019 Estimated Some High School (Grade Level 9 to 11)	1.0%	1.6%	2.0%
	2019 Estimated High School Graduate	9.6%	11.2%	11.8%
	2019 Estimated Some College	17.5%	16.7%	17.4%
	2019 Estimated Associates Degree Only	8.5%	7.9%	7.6%
	2019 Estimated Bachelors Degree Only	36.2%	37.3%	35.6%
	2019 Estimated Graduate Degree	26.0%	23.6%	23.8%
BUSINESS	2019 Estimated Total Businesses	265	7,704	16,217
	2019 Estimated Total Employees	2,681	109,239	231,749
	2019 Estimated Employee Population per Business	10.1	14.2	14.3
	2019 Estimated Residential Population per Business	52.6	12.5	15.2